



# Technical Data

## ArteMIS Scopes & Probes



**“Broad-spectrum Laparoscopes and External Use Vision Probes for Fluorescence and Color Imaging”**

**Unique:** ArteMIS Laparoscopes for minimally invasive and ArteMIS Vision Probes for external use are uniquely designed for the visualisation of Near Infrared-Fluorescent markers. Today there is no equivalent in apochromatism, low distortion, low vignetting and low reflection. With its broadspectrum capabilities (currently 430-950 nm) it provides the full colour image combined with the fluorescence image.

**Quality:** In co-operation with two of the leading (German / Italian) manufacturers, O<sub>2</sub>view B.V. offers you high quality broad-spectrum Laparoscopes and Vision Probes with:

- Magnetic / titanium focussing ring
- High optical fiber content for abundant excitation illumination
- Autoclavable
- Premium apochromatic optics (19 optical elements for the 390 mm laparoscope)
- Meeting all relevant international standards and tests

**Compatibility:** All ArteMIS Laparoscopes and Vision Probes are designed to work flawless with the ArteMIS Handheld multi-channel Camera Systems. Outside dimensions and connectors are compatible with industry standards.

- **First Laparoscope for Fluorescence Image-guided Surgery**
- **Broadspectrum range (430-950 nm), with very low chromatic aberration and low distortion**
- **Autoclavable**
- **Focussing system**
- **High-capacity optical fiber channel**
- **390 mm Laparoscopes available in two configurations: 0°/60° and 30°/30° (DOV/FOV)**
- **190 mm Vision Probes for external use in two configurations: 0°/30° and 0°/60° (DOV/FOV)**

*This product is not designed for cardiovascular bypass graft angiography*



O<sub>2</sub>view B.V.  
Marken  
the Netherlands

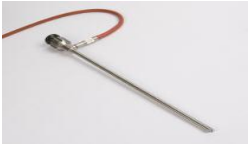
internet: [www.o2view.com](http://www.o2view.com)  
email: [info@o2view.com](mailto:info@o2view.com)



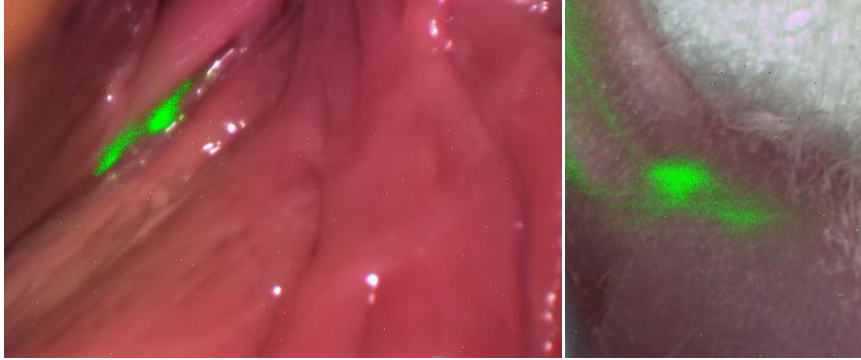
MD 553312



ISO 13485  
MD 553312



# Technical Data



Pre-clinical color / fluorescence images made with ArteMIS Handheld Camera / ArteMIS Laparoscope (left, lamb's hart) and ArteMIS Vision Probe (right, mouse)

Laparoscope Models [article number]	<ul style="list-style-type: none"> <li>• 10x390 mm (ØxL), 30° / 30° (DOV/FOV) article number: <b>Art-Lap-30-30</b></li> <li>• 10x390 mm (ØxL), 0° / 60° (DOV/FOV) article number: <b>Art-Lap-0-60</b></li> </ul>
Vision Probe Models [article number]	<ul style="list-style-type: none"> <li>• 10x190 mm (ØxL), 0° / 30° (DOV/FOV) article number <b>Art-Pr-0-30</b></li> <li>• 10x190 mm (ØxL), 0° / 60° (DOV/FOV) article number: <b>Art-Pr-0-60</b></li> </ul>
Length	<ul style="list-style-type: none"> <li>• Laparoscope: 390 mm</li> <li>• Vision probe: 190 mm</li> </ul>
Diameter	10 mm
Working distance	10 mm – 150 mm
Focus	Manual focus ring
Focal zoom range	approximately 7 mm
Max. aperture	Laparoscope: F/N = 15

Resolution	MTF > 40% @ 40lp/mm on axis MTF > 30% @ 40lp/mm max FOV
Distortion	less than 0.3%
Vignetting	less than 15%
Chromatic aberration	less than 0.5 pixels
Connections for lighting cable	Storz / Wolff / ACMI connectors
Autoclavable	134° C
Operating conditions	<ul style="list-style-type: none"> <li>• 0 °C to +35 °C</li> <li>• up to 70% RH</li> </ul>
Standards Optics and photonics	<ul style="list-style-type: none"> <li>• ISO 8600-1</li> <li>• ISO 8600-3/Amd 1</li> <li>• ISO 8600-4</li> <li>• ISO 8600-5</li> </ul>

Information furnished by O<sub>2</sub>view B.V. is believed to be reliable. No responsibility is assumed, however, for possible inaccuracies or omissions. Specifications and external appearances are subject to change without notice.